

Compac



ACCURACY



INNOVATION



TECHNOLOGY



InVision 9000

Blemish • Color • Diameter



The **most advanced blemish grading system** on the market today

Increase production and profit with Compac's **InVision 9000**

Being
developed for
apples, tomatoes,
potatoes and
stone fruit

What makes Compac's **InVision 9000** a revolutionary system for blemish grading? Its combination of unique, practical design and sophisticated software.

The **InVision 9000** system uses multiple high definition cameras to view 100% of each fruit's surface. This allows the system to view and identify surface blemishes and imperfections. The cameras are housed in a sealed temperature-controlled cabinet situated above the fruit carriers. In addition, the enclosed camera system creates a dust and splash free zone that provides high quality images with very low maintenance. With this protection, your **InVision 9000** system stays reliable, with superior performance day in, day out.

Dedicated computers and software capture and analyze images from the camera. The powerful computer system uses Compac's state-of-the-art software to analyze, track, and grade fruit based on visual criteria. Software algorithms allow it to track, record and save blemish details to memory as fruit pass underneath the cameras. The operator can sort fruit into different operator defined grades based on the fruit's surface conditions: color, diameter, shape, presence of blemishes and more.

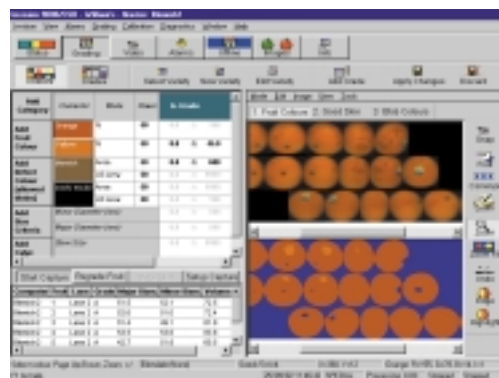
InVision 9000 can be installed on Compac manufactured sorters. It can also be installed as a retrofit onto many other brands of sorter.

Benefits

- Increases profits by reducing packing cost per carton
- Reduces labor requirements
- Achieves significantly improved grading accuracy by reducing inconsistencies involved with human sorting
- Provides a greater recovery percentage of high value fruit for export
- Provides valuable grower production information saving time and money long term

Features

- True 3D view of each fruit using a unique optical system
- Allows a 100% view of each fruit's surface
- Provides for individual, user-defined grading parameters
- Grades by intensity, number, area and position of blemishes
- Recognizes both stem and calyx
- Provides consistent color interpretation
- High resolution cameras detect even the smallest defects
- Accurate diameter sizing allows for frost-damaged fruit to be detected
- Recognizes 'navels' in navel oranges
- Available in lane multiples to suit requirements of individual pack houses
- Provides consistent and even lighting in the grading area which is vital for good blemish grading
- Fast sorting speed of more than 12 fruit/sec if required
- Wide operational temperature range
- Continuous automatic calibration
- Easy to keep clean and free from debris



ACCURACY



INNOVATION



TECHNOLOGY



Compac



COMPAC SORTING EQUIPMENT LTD, PO Box 13 516, Auckland, NEW ZEALAND.
Phone: +64-9-634 0088 Fax: +64-9-634 4491 E-mail: sales@compacsort.com

www.compacsort.com